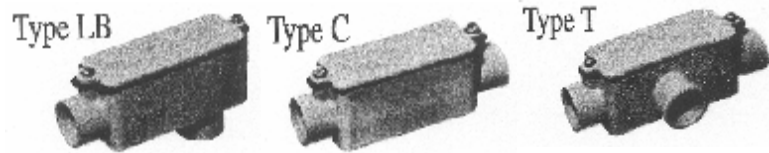


# Intermediate Signals Field Kit

# Basics - Conduit Fittings & Tie Marking

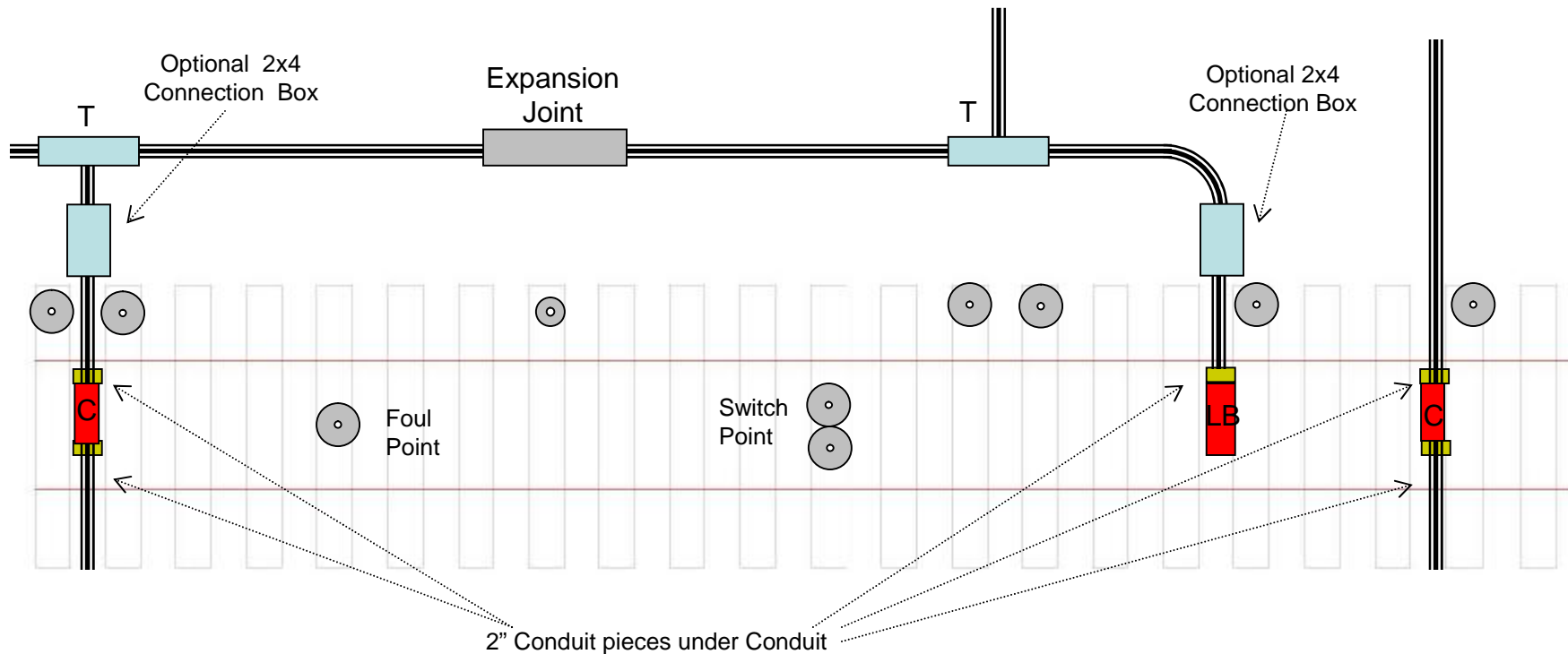
## Conduit Boxes



- One 2" Fender Washer at Foul Point
- Two 2" Fender Washers at Switch Point

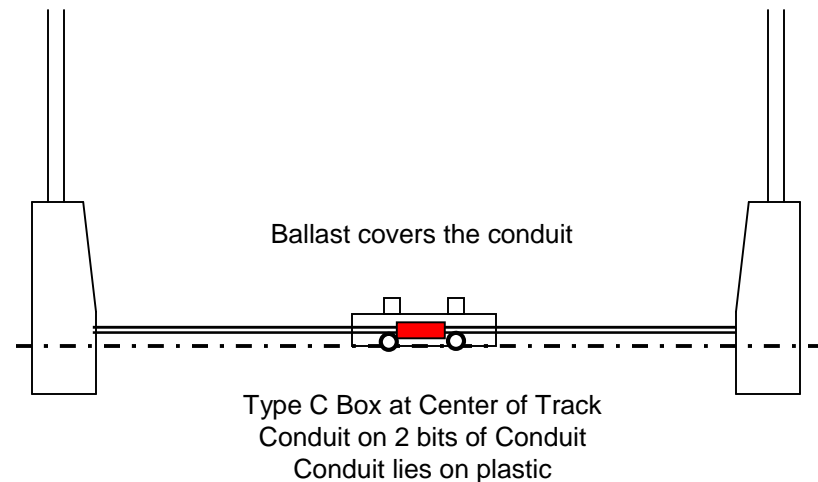
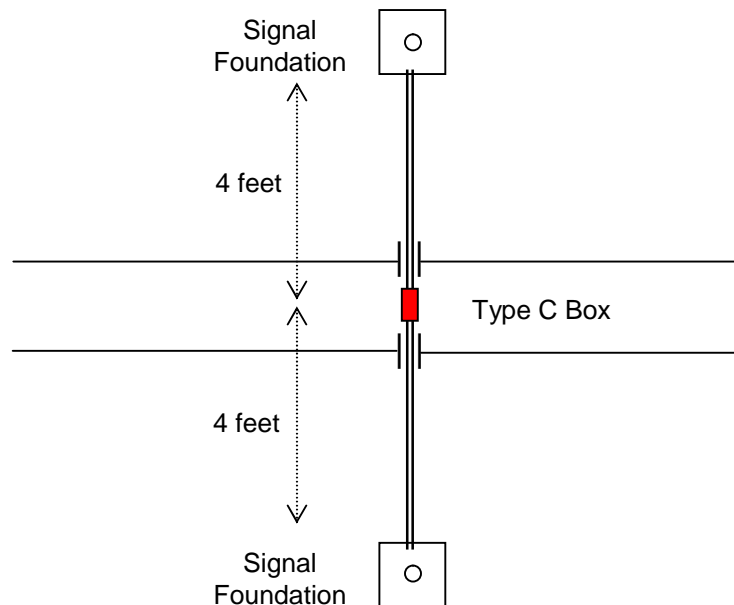
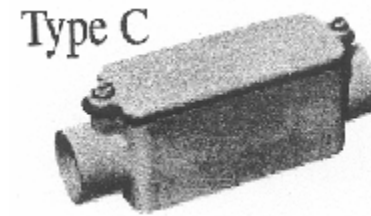
## Washers Locate Boxes

- Two 2" Fender Washers means a Type T box is nearby.
- One 2" Fender Washer means a Type C or Type LB box between the tracks.
- One 1" Washer means an Expansion Joint nearby



# Intermediate Signals - Install Foundations, Insulators, and Conduit

- Intermediate Signals go at Block Boundaries
- One Signal Mast must be in Sun 4 hours a day
- Foundation Blocks 4' from center line of track
- Both rails get insulators
- Conduit lies directly on plastic
- Type C box at center of track
  - Conduit rests on two 2" bits of conduit
- Signal Mast screwed into top of Foundation Block
  - 18" rigid  $\frac{3}{4}$ " metal conduit threaded both ends



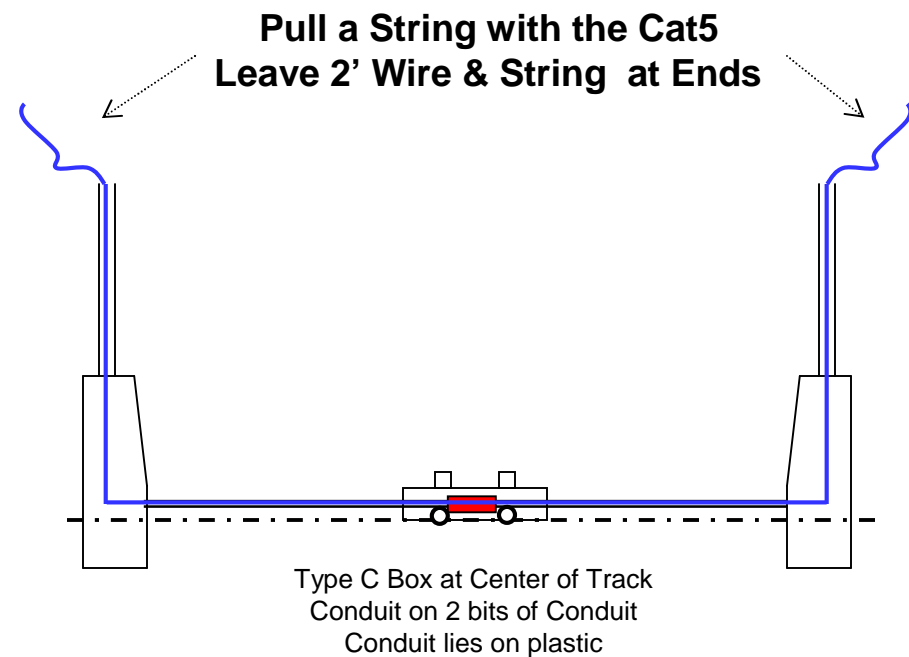
# Intermediate Signals - Pull Wire

## Cat5 Pulls

- Signal Mast to Signal Mast - Blue Cat5

—— Blue Cat5 Wire

**Note :** The Track Team pulls all the wire that goes through an Expansion Joint. The Signal Team pulls the rest of the wire which includes all the 18 AWG wire. If there is a Remote Solar Panel, the Track Team pulls Red and Black 18AWG From the Solar Panel to the CP Board Enclosure.



# Intermediate Signals - Pre Ballast Checklist

## Insulators

Track Insulators Both Rails

## Signal Foundations

- 2 Foundation Blocks
- One Foundation in Sun 4+ hours a day
- 4' from centerline of Track
- 18" threaded Mast in each Foundation Block

## Flex Conduit

Between Joints

## Conduit

- Conduit between Foundation Blocks
- Conduit on top of Plastic
- Type C Track Box between rails
- Type C Track Box on 2" pieces of conduit

## Washers

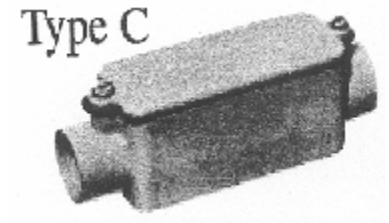
2" Washer marks Track Box - Top of Tie at End

## Wire Pull

- Blue Cat5 between Signal Masts
- String between Signal Masts
- 2' string & Cat5 on each end

## Plywood

Plywood over Type C box



Where \_\_\_\_\_

By \_\_\_\_\_

Date \_\_\_\_\_